



SPECIALIZED END MARKETS



AEROSPACE & DEFENSE



MEDICAL



SPACE

*Veris provides Tier I capabilities
with the care and service
of a Tier III EMS partner*

HIGHLIGHTS

- Nadcap & Space Addendum
- Radio Frequency (RF) Specialist
- Advanced & Complex Manufacturing

ABOUT VERIS

NEVER RESTING, ALWAYS INVESTING

Our company was created more than 35 years ago to solve a problem for a customer. Since then we've never stopped problem solving, nor do we plan to.

From the beginning, we at Veris have listened to our customers and proactively invested in expanding our capabilities to meet their needs.

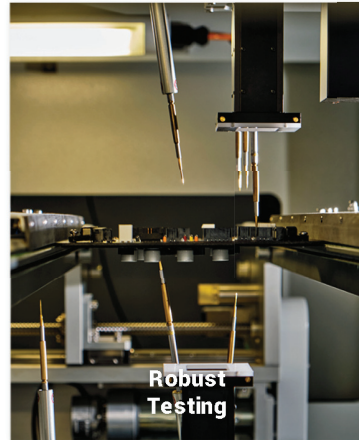
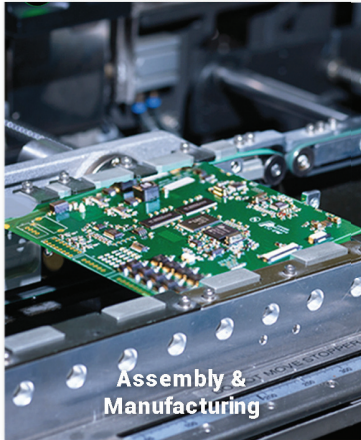
We invest continually in acquiring the newest, most advanced equipment and in perfecting our quality, product development, manufacturing and testing to meet the exacting standards of high-reliability industries.

But by far the most important investment we at Veris make is in our people.

Veris has a proud tradition of developing our workforce. We invest continually in our team members' ongoing education and training, helping them build the skillsets to gain the experience they need to become leaders and valued partners in our customers' success.

The motivated and inspired employees building your products with quality and pride are the best investment we ever made.





HIGHLIGHTS

- Nadcap & Space Addendum
- RF Specialist
- Advanced & Complex Mfg

CERTIFICATIONS

- Nadcap
- ISO 9001
- ISO 13485
- ITAR
- AS9100

SERVICES

- PCBA
- Box Build
- Quick Turn Prototyping
- Cable Assembly
- Conformal Coating
- Underfill & Potting
- Testing & Test Design Assistance
- 3D AOI & 3D X-Ray
- Optical Fiber Splicing
- Supply Chain Logistics
- Direct Order Fulfillment
- DFM Services

WHY CHOOSE VERIS?

Veris is the top choice for your **high-reliability, high-quality, and complex assemblies**. We specialize in advanced manufacturing, creating specialized service programs that fit the unique needs of each customer. When it absolutely has to work the first time and every time, Veris is your partner of choice.

✓ Customized Service Solutions

✓ Flexibility

✓ Dedicated Program Management

33,000+
sq ft

5
SMT Lines

150+
Team Members

**AT VERIS
YOUR VISION IS
OUR FOCUS**